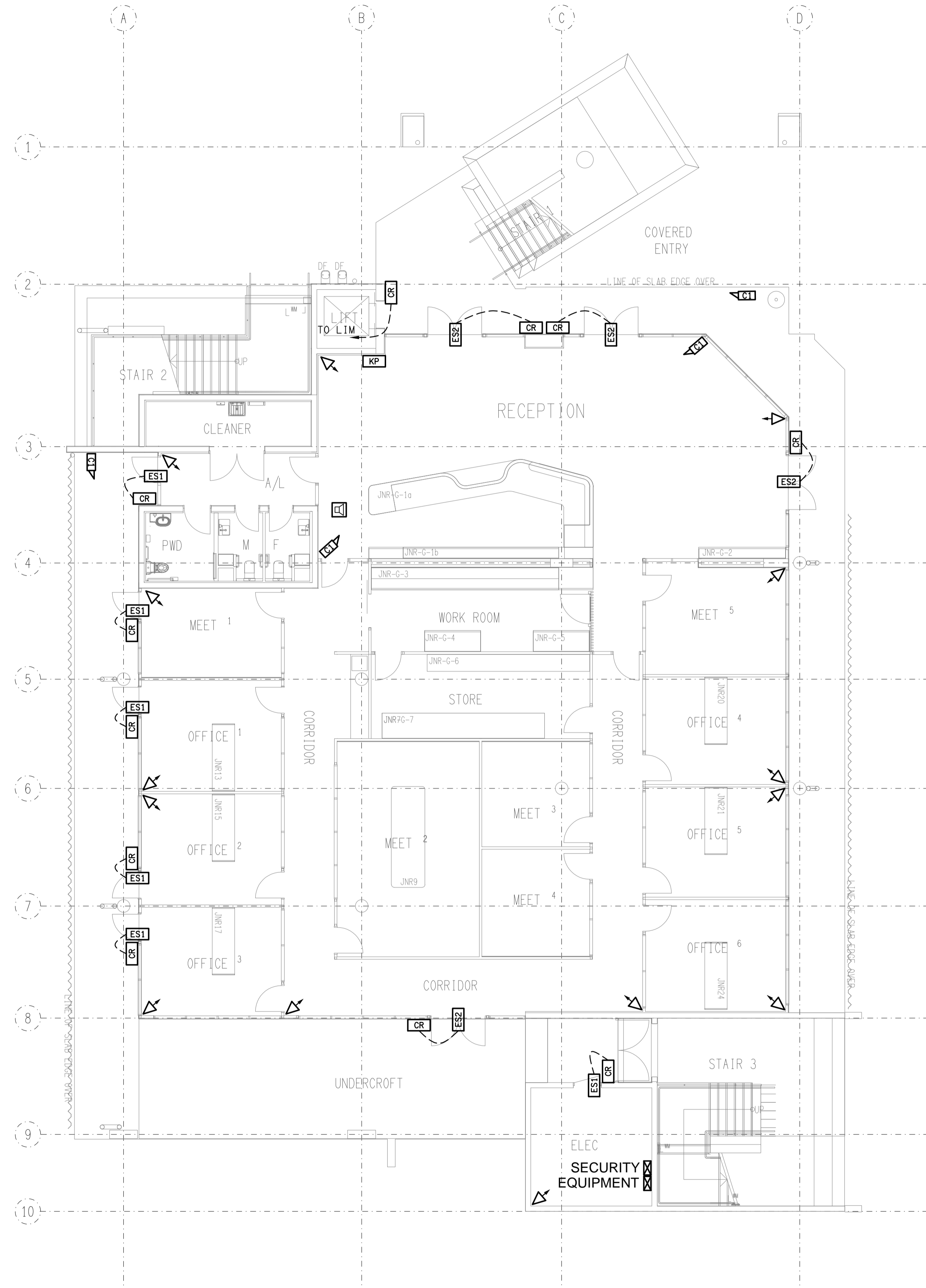


LEGEND

- ES1** ACCESS CONTROL CONVENTIONAL ELECTRIC STRIKE.
- ES2** ACCESS CONTROL CONVENTIONAL ELECTRIC STRIKE C/W POWER TRANSFER HINGE.
- CR** ACCESS CONTROL CARD READER.
- CC1** CEILING MOUNTED CCTV CAMERA. CAT 6 UTP CABLE AND PLUG BY THE ELECTRICAL SUB CONTRACTOR.
- CC2** WALL MOUNTED CCTV CAMERA. CAT 6 UTP CABLE AND PLUG BY THE ELECTRICAL SUB CONTRACTOR.
- PI** SECURITY PIEZO SIREN.
- DM** SECURITY DIRECTIONAL MOTION SENSOR.
- LIM** LIFT INTERFACE MODULE.
- KP** ARMING / DISARMING KEY PANEL.
- SE** SECURITY EQUIPMENT.



ELECTRICAL DESIGN GROUP BRISBANE
PTY LTD
ACN 092 710 793

THE COPYRIGHT OF THIS DRAWING
REMAINS THE PROPERTY OF THE
ELECTRICAL DESIGN GROUP.

USE FIGURED DIMENSIONS
IN PREFERENCE TO SCALE.
ALL DIMENSIONS TO BE
VERIFIED ONSITE.

ELECTRICAL DESIGN GROUP
ELECTRICAL BUILDING SERVICES CONSULTANTS
BRISBANE GOLD COAST

P.O. Box 15, Sherwood Q.4075
Phone: (07) 3278 4375
Email: brisbane@edg.net.au
Web: www.edg.net.au

PROJECT:
**KINGS CHRISTIAN COLLEGE PIMPAMA
SENIOR SCHOOL ADMINISTRATION - PIM21**

198 PIMPAMA JACOBS WELL ROAD, PIMPAMA, QUEENSLAND

B	CONSTRUCTION	23/03/2026
REV.	DESCRIPTION:	DATE:

DRAWING:
**ELECTRICAL SERVICES
SECURITY
LEGEND & GROUND LEVEL PLAN**

SCALE: 1:100	PROJECT NO: C3475a	DRAWING NO: S01	REVISION: B
-----------------	------------------------------	---------------------------	-----------------------